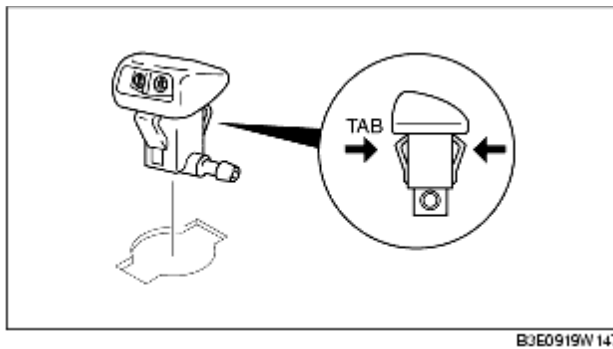


## WINDSHIELD WASHER NOZZLE REMOVAL/INSTALLATION

---

B3E091967510W01

1. Remove the bonnet insulator.
2. Remove the windshield washer hose from the windshield washer nozzle.
3. Squeeze the tabs of the windshield washer nozzle.
4. Pull the windshield washer nozzle out to remove it.



5. Install in the reverse order of removal.